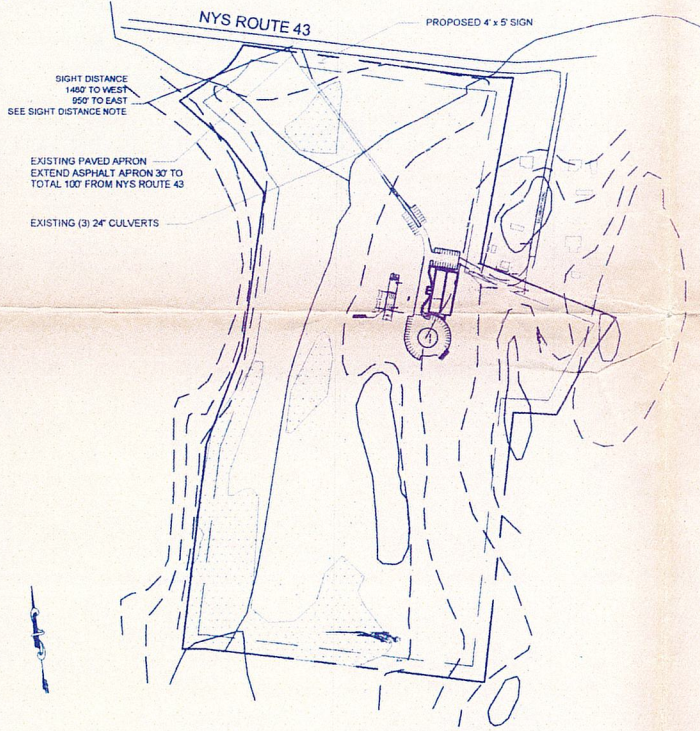


LOCATION PLAN

SCALE: 1" = 2000'



PROPERTY BOUNDARIES

SCALE: 1" = 300'

SITE DATA

AREA OF SITE - 51.47 ± ACRES
EXISTING ZONING - AG/Ru - Agricultural Rural
Religious Facility Permitted by Right

PROPOSED USE - CHURCH (80'x156') (12,480 SF) W/ CHAPEL (100 SEATS)

PARKING PROVIDED: 1 SPACE PER 2 SEATS = 50 SPACES + 15 MORE = 65 SPACES

SEWER SERVICE - CONVENTIONAL SEPTIC SYSTEM WITH MODIFIED SOIL

WATER SERVICE - INDIVIDUAL WELL

LOT REQUIREMENTS Type B

	Required	Provided
MINIMUM SIZE	2 acres	51.47 acres
MINIMUM LOT WIDTH	200 Ft. @ Setback	987± Ft. @ Setback
FRONT YARD SETBACK	50 Ft.	695± Ft.
SIDE YARD SETBACK	50 Ft.	87± Ft.
REAR YARD SETBACK	50 Ft.	1260± Ft.
MAXIMUM COVERAGE	10%	0.5%
MAXIMUM BLDG HT	2.5 Stories / 35'	28'-4"

SIGHT DISTANCE NOTE:
RECOMMENDED STOPPING SIGHT
DISTANCE FOR WET PAVEMENTS FOR
55 MPH DESIGN SPEED IS 450-550 FT
PER AASHTO - GEOMETRIC DESIGN
OF HIGHWAYS AND STREETS

PROVIDE FLOOR PLAN

Flow Calc in 6' PD? 400 8' PD?

GRADING PLAN

SCALE: 1" = 40'

MILL CREEK

TRIBUTARY TO
MILL CREEK
4 - 224 - 10 114"

PROPOSED
OVERFLOW
PARKING

15" 40 LF CULVERT
INV IN: 80.75
INV OUT: 80.35

PROPOSED UTILITY
POLE W/ LIGHT

PROPOSED
GRAVEL DRIVE

LANDS OF
RENSSELAER OPEN BIBLE BAPTIST CHURCH, INC
REEL 369 OF DEEDS, FRAME 2336

PROP.
SEWAGE
SYSTEM

PROPOSED WALL PACK
LIGHT

TURNAROUND
65' DIA CIRCLE

PROPOSED
DUMPSTER

PROPOSED
STORAGE SHED

PAVED
WALK

POCKET
POND

DROP
OFF

CHURCH

FOREBAY

15" 40 LF CULVERT
INV IN: 89.0
INV OUT: 88.6

LANDS N/F
NEIL W. SALISBURY
BOOK 3294 OF DEEDS, PAGE 345

BENCHMARK 1:
60 PENNY SPIKE IN
NORTH SIDE UTILITY POLE
NYSEG L56-96
ELEV. = 100.00' (ASSUMED)

EMERGENCY
ACCESS
EXISTING UTILITY
POLE W/ LIGHT

WELL

BENCHMARK 2:
60 PENNY SPIKE
IN 8" TWIN CHERRY
ELEV. = 99.15' (ASSUMED)

1. TOPOGRAPHY INFORMATION FROM PLANS TITLED "TOPOGRAPHIC
SURVEY PREPARED FOR RENSSELAER OPEN BIBLE BAPTIST CHURCH"
DATED JUNE 13, 2008, BY WILLIAM C. DARLING, P.L.S.

Rensselaer Open Bible Baptist Church

4401 State Route 43 North Greenbush
Rensselaer County, New York

Tax Map #145.00-9-9.12

Scale: As Noted

Rev. 1: November 6, 2008

SHEET 1 OF 2

SITE PLAN
WITH CONVENTIONAL SEWAGE SYSTEM W/ MODIFIED SOIL

PREPARED FOR: Glen Hamilton, Pastor
187 South Rock
Capeville, N.Y. 12052

PREPARED BY: Harold Berger, P.E.
P.O. Box 513
Clifton Park, NY 12065

Scott Reese, RLA
15 Sevilla Drive
Clifton Park, NY 12065



APPROVAL:

Rensselaer County Health Department
for Conditions of Approval see
Certificate issued in conjunction
with these plans. Expires
from Approval Date
Approved on this the 16 day of June 2009

16 day of June 2009